



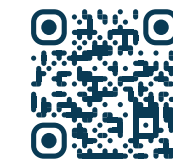
## Bring Class II patients to Class I by using D-bar

**D-bar** is a direct bond orthodontic appliance that provides a Class II treatment solution for primary, permanent or mixed dentition.

**D-bar** is designed to optimize the molar relationship by minimizing canine over-extrusion, with a highly aesthetic design for improved comfort and reduced treatment time.

**D-bar** has a **universal design** for both the left and right sides.

**D-bar** consists of **two separate components** that must be assembled by the clinician at the time of positioning or through an indirect bonding procedure.



Scan the QR Code  
and ask for further  
information about D-bar.

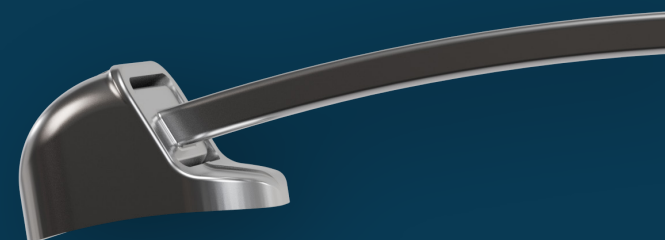


**Sia Orthodontic Manufacturer srl**  
Zona Industriale snc  
81050 - Rocca D'Evandro (CE) - Italy

+39 0823 908029

info@siaorthodontics.com

www.siaorthodontics.com



# D-bar

## Class II Correction Appliance



**SIA**  
ORTHODONTIC  
MANUFACTURER

### Distalization

Designed to promote optimization of the intermaxillary relationship

### Digital

Designed to be incorporated into the digital workflow and placed by an indirect bonding procedure

### Discreet

Compatible with **i-liner** clear aligners for a more effective aesthetic treatment

### Duration

Effective in reducing the orthodontic overall treatment time

**D-bar**



## PACKAGING

**D-bar** is available in individual packs and sets.

The individual pack contains two universal bars of the same size, two molar sockets and a ruler.

The set contains 24 universal bars (two of each size), 24 molar sockets, a tweezer and 24 rulers.

REF.	DESCRIPTION	CONTENT
B30-DB16	D-bar - size 16	2 Bars 2 Molar Sockets 1 Ruler
B30-DB17	D-bar - size 17	
B30-DB18	D-bar - size 18	
B30-DB19	D-bar - size 19	
B30-DB20	D-bar - size 20	
B30-DB21	D-bar - size 21	
B30-DB22	D-bar - size 22	
B30-DB23	D-bar - size 23	
B30-DB24	D-bar - size 24	
B30-DB25	D-bar - size 25	2 Molar Sockets
B30-DB26	D-bar - size 26	
B30-DB27	D-bar - size 27	
B30-DB T	D-bar - molar support	2 Molar Sockets
		24 Bars (2 per size)
		24 Molar Sockets
		24 Rulers
		1 Tweezer
B30-DB K	D-bar - Set	

## FEATURES

### PRECISION

The reduction of the freedom degrees of the bar-socket connection prevents molar-canine undesired segment movements

### UNIVERSAL

Designed to be used on either the left or right side

### EFFECTIVENESS

Extremely mesial hook position to increase the effectiveness of the appliance

### ERGONOMICS

Correct positioning on the molar is easy, thanks to the two reference positioning lines. The laser marking makes it easier to identify the suitable size

### RESISTANCE

Retentive base features laser-cut undercuts to increase the bonding strength

## WHEN TO USE

D-bar is a device that offers a quick and effective solution for Class II malocclusions, either in patients with primary, permanent, or mixed dentition. This is preferably used at the beginning of treatment for distalization of molars and premolars.

D-bar can be used **alone or with other devices** such as aligners or fixed orthodontic appliances.

D-bar also helps in Class III cases by placing it on the lower arch.

## ADVANTAGES

**Control of the molar-canine segment.** The connection system has been designed with tight tolerances to increase treatment effectiveness by minimizing undesired inter-arches or cuspids movements.

**Effectiveness.** The position of the hook on the canine's mesial side increases the appliance's effectiveness by increasing horizontal forces compared to vertical extrusion.

**Easy positioning.** The mesiodistal and occlusal-gingival positioning lines facilitate the positioning of the socket on the tooth.

**Reduced treatment time.** The use of a D-bar improves the molar relationship, which speeds up the orthodontic treatment.

**Comfort.** Its smooth and low-profile design improves patient comfort and compliance during treatment.

## HOW

## FEATURES

D-bar is universal and consists of **two components**, a molar socket and a bar, which are delivered unassembled.

It is **possible to easily replace only the bar** or change its size during therapy if clinical conditions require. This feature makes D-bar flexible, reducing and simplifying the clinic's inventory.

D-bar **can also be integrated into the digital workflow** and placed by indirect bonding; in fact, the use of two separate components makes it possible to integrate the device into templates or transfer jigs.

D-bar is **entirely made by MIM technology in 17-4 stainless steel**; the retentive base is made with a high-frequency laser system for excellent resistance to detachment. Any orthodontic adhesive can be used.

D-bar **is available** in one millimeter increments **in twelve sizes**, from size 16 to 27. Measurement identification is easy and fast, thanks to laser marking.

## HOW TO USE

After selecting the most appropriate **D-bar size**, **bond the molar socket to the upper molar** (or premolar, if required).

Insert the bar into the molar socket **until the round end completely disappears**, then continue to bond the other end to the canine (or premolar, if required). On the lower molar or bicuspid, bond an **auxilliary appliance** (tube or lingual button) and connect it to the **hook** of the bar with an intraoral elastic.

**After solving the Class II, the D-bar can be removed.**

It is always recommended to consult the instructions supplied with the product.

## WHEN